

2006 AGM



Ian Smith, MD & CEO

Safety

Lost Time Injury Frequency Rate per million work hours

2005	2.2
2006	1.3

a 40% reduction

Introducing Semi Quantitative Risk Assessments which will continue the improving trend in safety profile.

Location Map



Cadia Valley Operations

- **2 mines**
 - **Cadia Hill - large scale open pit**
 - **Ridgeway - underground sub-level caving mine**
- **Mineral Resource: 6.6 Moz gold and 0.53 Mt copper**
- **Ore Reserve: 4.1 Moz gold and 0.32 Mt copper**
- **Mine life:**
 - **Cadia Hill 2013**
 - **Ridgeway 2010**

Telfer

- **2 mines**
 - large scale open pit
 - underground sub-level caving mine
- **Mineral Resource: 25 Moz gold & 0.83 Mt copper**
- **Ore Reserve: 17 Moz gold & 0.59 Mt copper**
- **Mine life: 20+ years**

Cracow (70% NCM)

- High grade epithermal underground mine
-
- Mineral Resource: 0.78 Moz gold
- Ore Reserve: 0.14 Moz gold
- Mine Life: 2013 (current life of mine plan incorporates 3 ore shoots with several others identified and being evaluated)

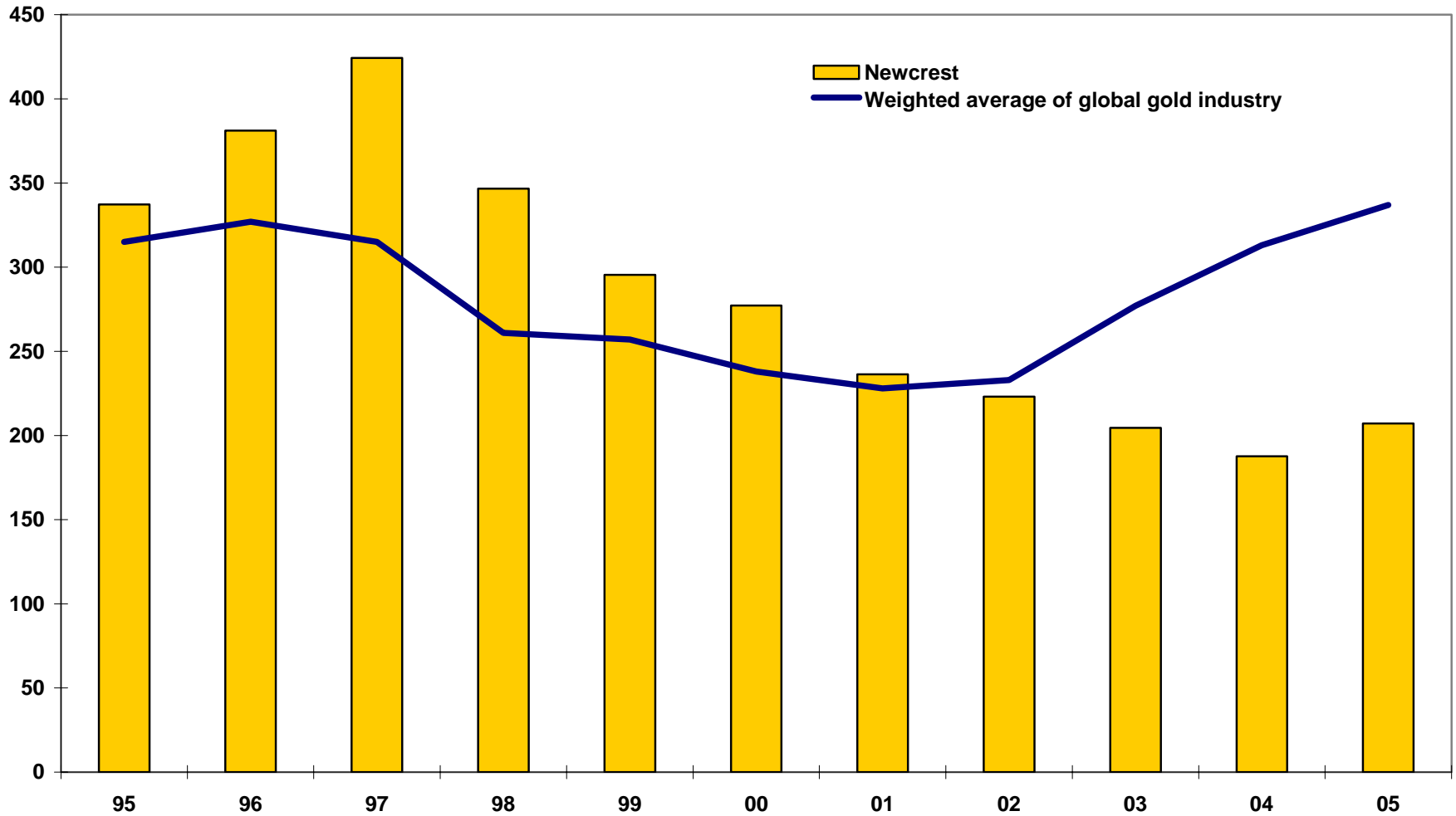
All numbers quoted on 100% Basis

Gosowong Province

- 2 mines
- Toguraci (open pit)
 - completed mining in October 2006
- Kencana (underground)
 - Mineral Resource: 3.15 Moz
 - Ore Reserve: 1.33 Moz at 38 grams/tonne
 - Mine life: >5 years

Total Costs – Newcrest v Global

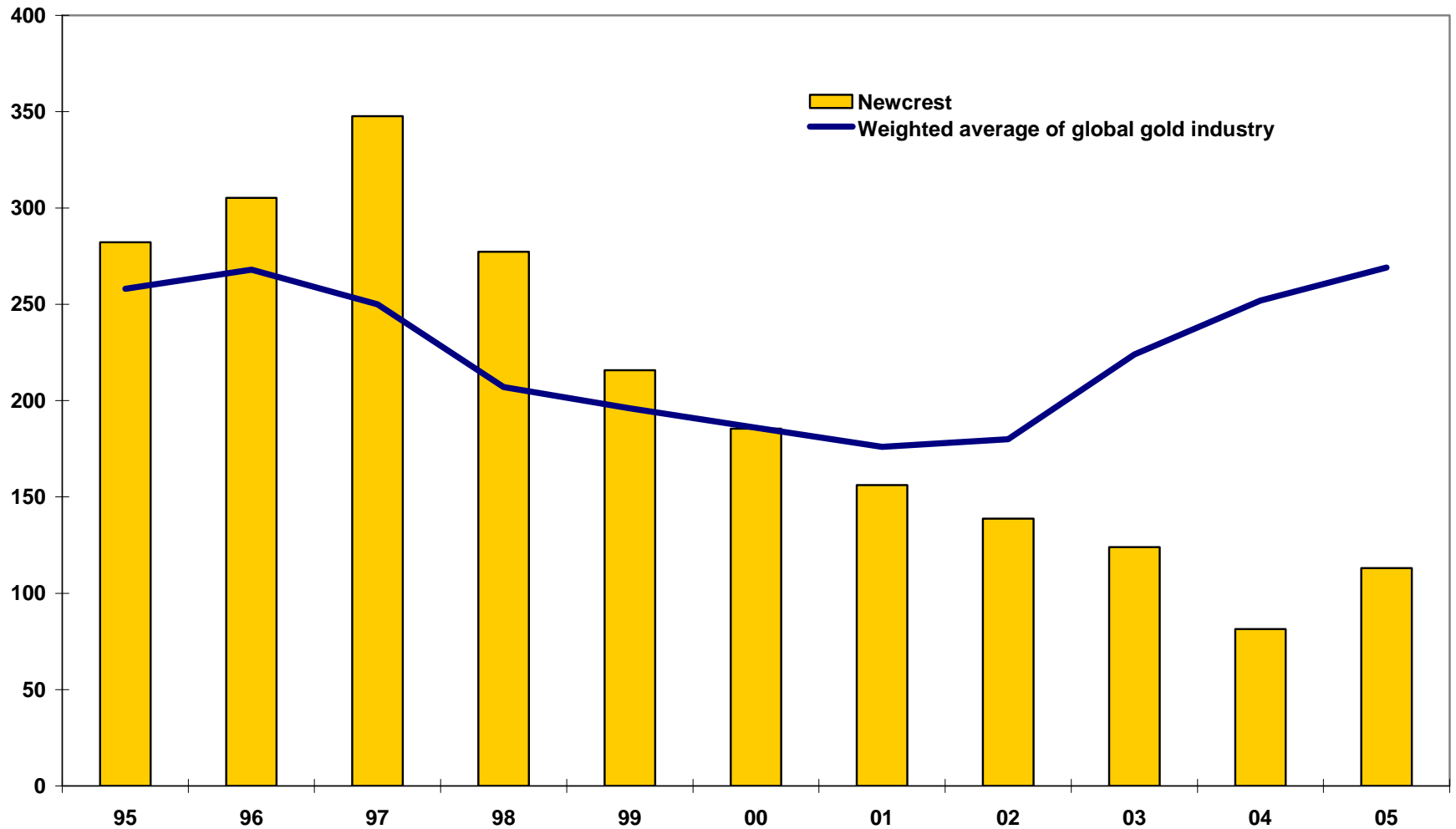
USD per ounce



Source: GFMS Ltd and Newcrest

Cash Costs – Newcrest v Global

USD per ounce

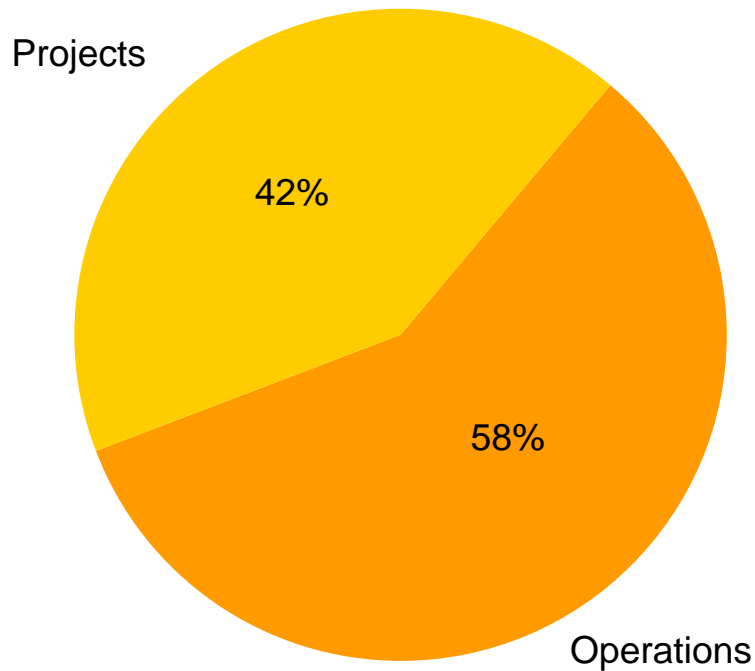


Source: GFMS Ltd and Newcrest

Mineral Resource at 30 June 2006

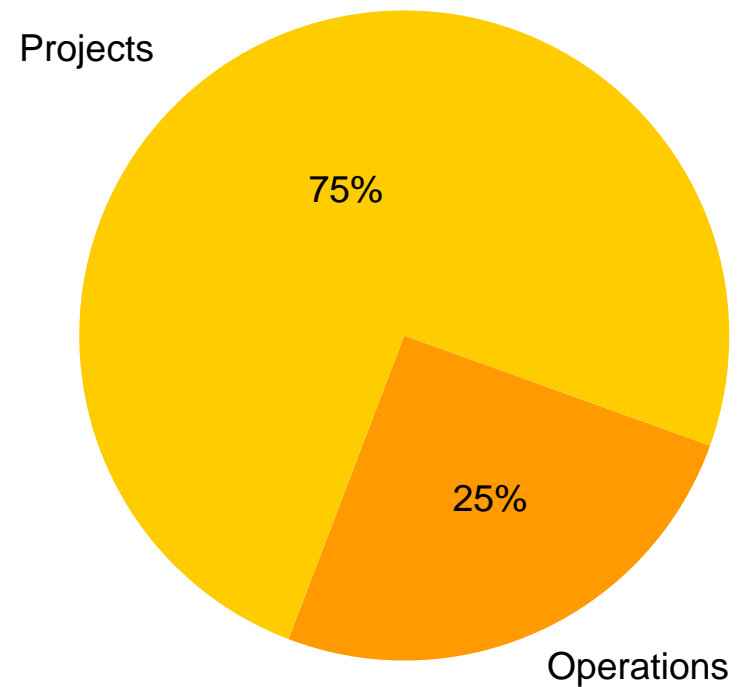
Gold

59 million ounces



Copper

5.5 million tonnes

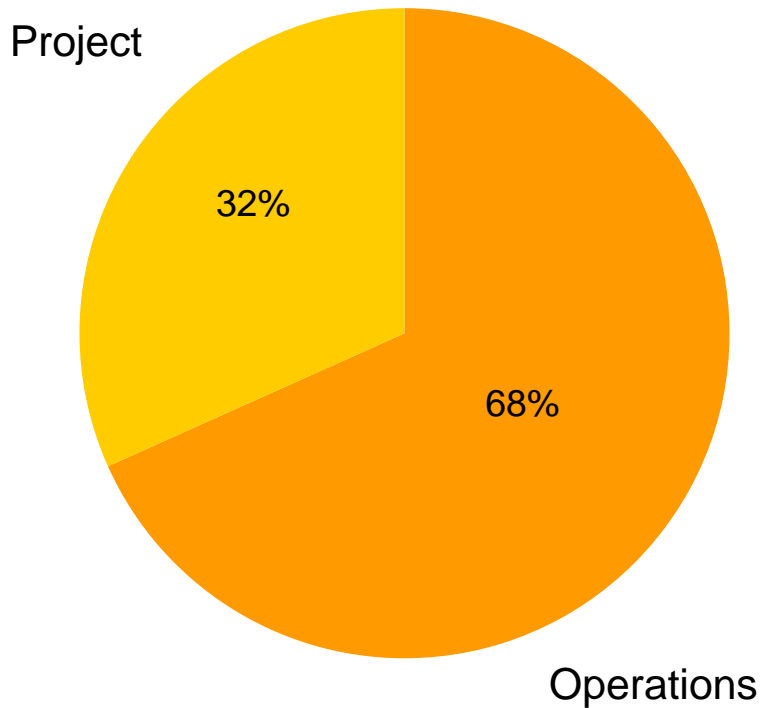


Projects comprise: Ridgeway Deeps, Cadia East Underground & Open Pit

Ore Reserves at 30 June 2006

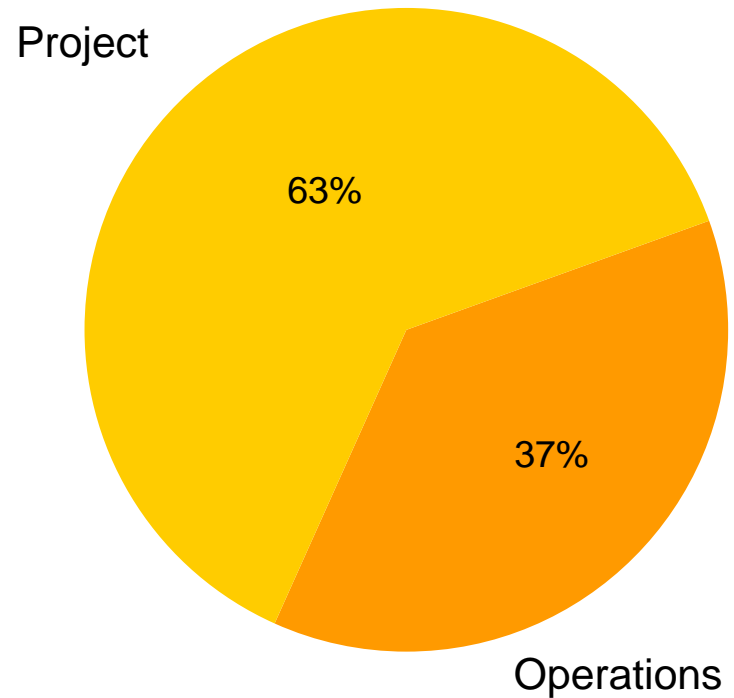
Gold

33 million ounces



Copper

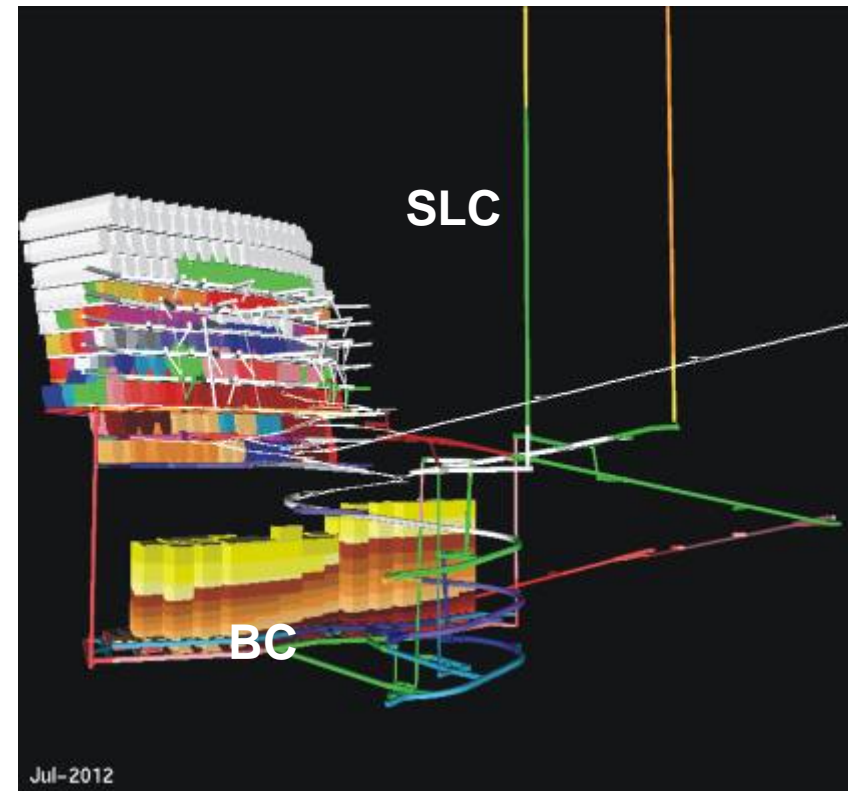
2.4 million tonnes



Projects comprise: Ridgeway Deeps, Cadia East Underground & Open Pit

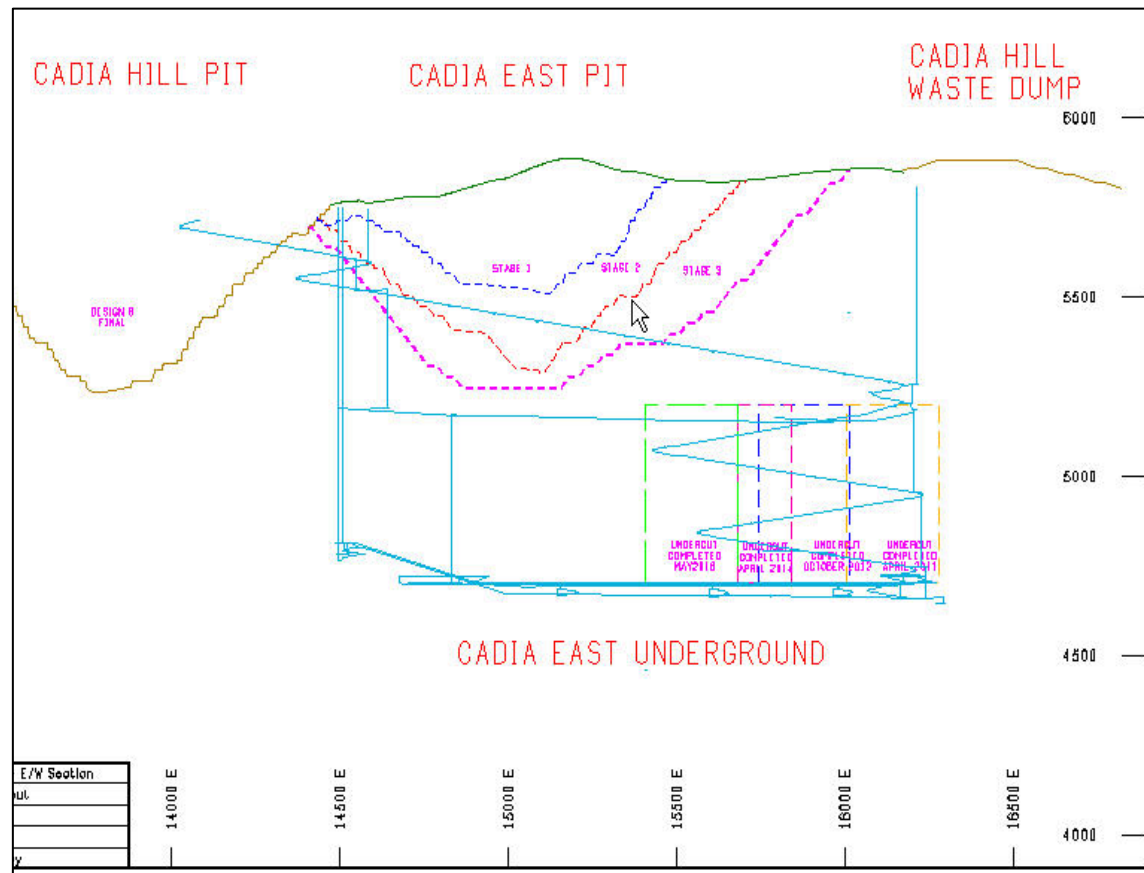
Ridgeway Deeps Block Cave Project

- **First Block Cave (BC) mine for Newcrest**
 - Conditions more suitable for BC
 - BC lower cost, higher value
- **Mineral Resource: 2.6 Moz gold & 0.33 Mt copper**
- **Ore Reserve: 1.3 Moz gold & 0.15 Mt copper**
- **Proforma production profile**
 - Gold production ~ 150,000 oz pa
 - Copper production ~ 20,000 t pa
 - 10 year mine life



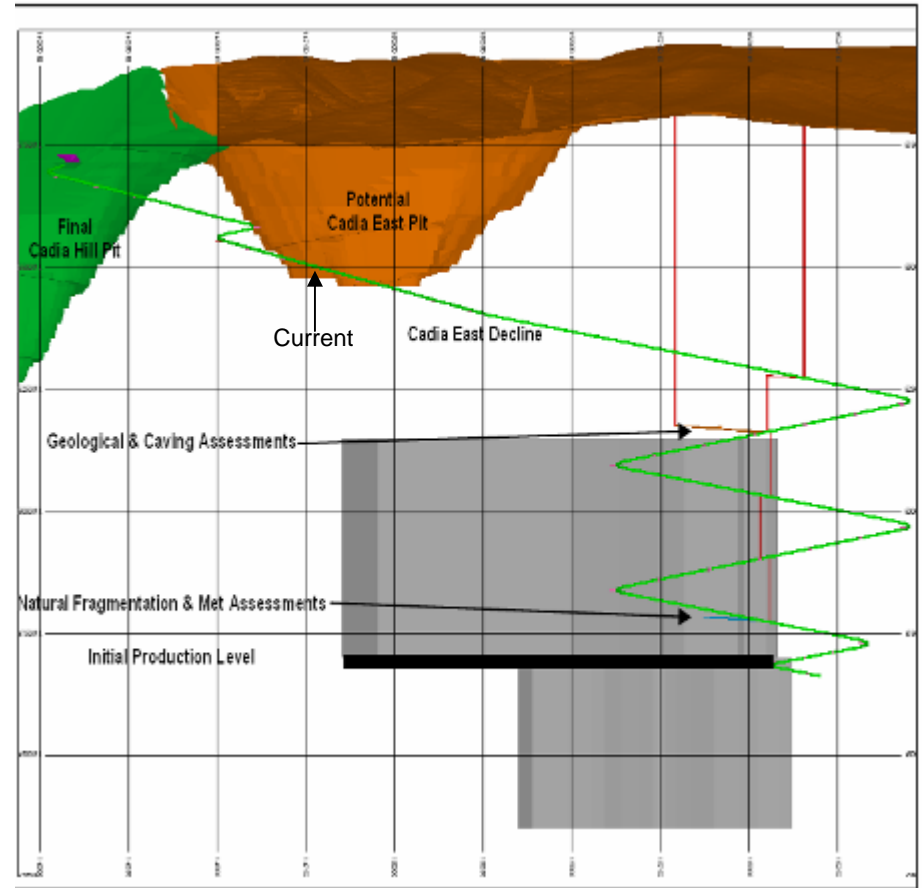
Cadia East Pit Project

- **Mineral Resource: 5.9 Moz gold and 1.4 Mt copper**
- **New Ore Reserves: 1.8 Moz gold and 0.63 Mt copper**
- **Proforma production profile**
 - Gold ~ 145,000 oz pa
 - Copper ~ 55,000 t pa
 - Over 10 years



Cadia East Underground Project

- Will be Australia's largest underground mine (Panel Cave)
- Mineral Resource: 16 Moz gold and 2.2 Mt copper
- Ore Reserves: 7.3 Moz gold and 0.75 Mt copper
- Long life asset
- Proforma production profile
@ 16 Mtpa
 - Gold 300,000 – 330,000 oz
 - Copper 60,000 – 64,000 t@ 32 Mtpa
 - Gold 600,000 – 660,000 oz
 - Copper 120,000 – 128,000 t



Gosowong District Projects

- **Commenced exploration in 1992**
- **Halmahera Contract of Works covers an area of 30,000 hectares**
 - **7% undergone moderate exploration**
 - **93% preliminary exploration activity and no drilling**
- **Secure tenure of 30 years**
- **1.26 Moz mined to date**
- **3.15 Moz in Mineral Resource**

The Future

Metals Economic Group ranked Newcrest as the most successful company in discovering major gold deposits between 1992 – 2005

65 Moz gold

98 Moz gold equivalent

A GREAT PLATFORM FOR GROWTH